




Street-Level Photos For Everyone



@kokoye2007 - Myanmar



Mapillary is a service for
crowdsourcing street-level photos



Manhattan, bhouse1



Malmö office, peter



Great Wall of China (Mutianyu), yours truly



Antarctica, janine



???, enoinyangete

A new approach to street view

Mapillary creates street-level views by using computer vision to stitch together overlapping photos taken with any camera.



2,100,000 km mapped



97M+ photos collected in 180+ countries, fully automated processing.

Capturing

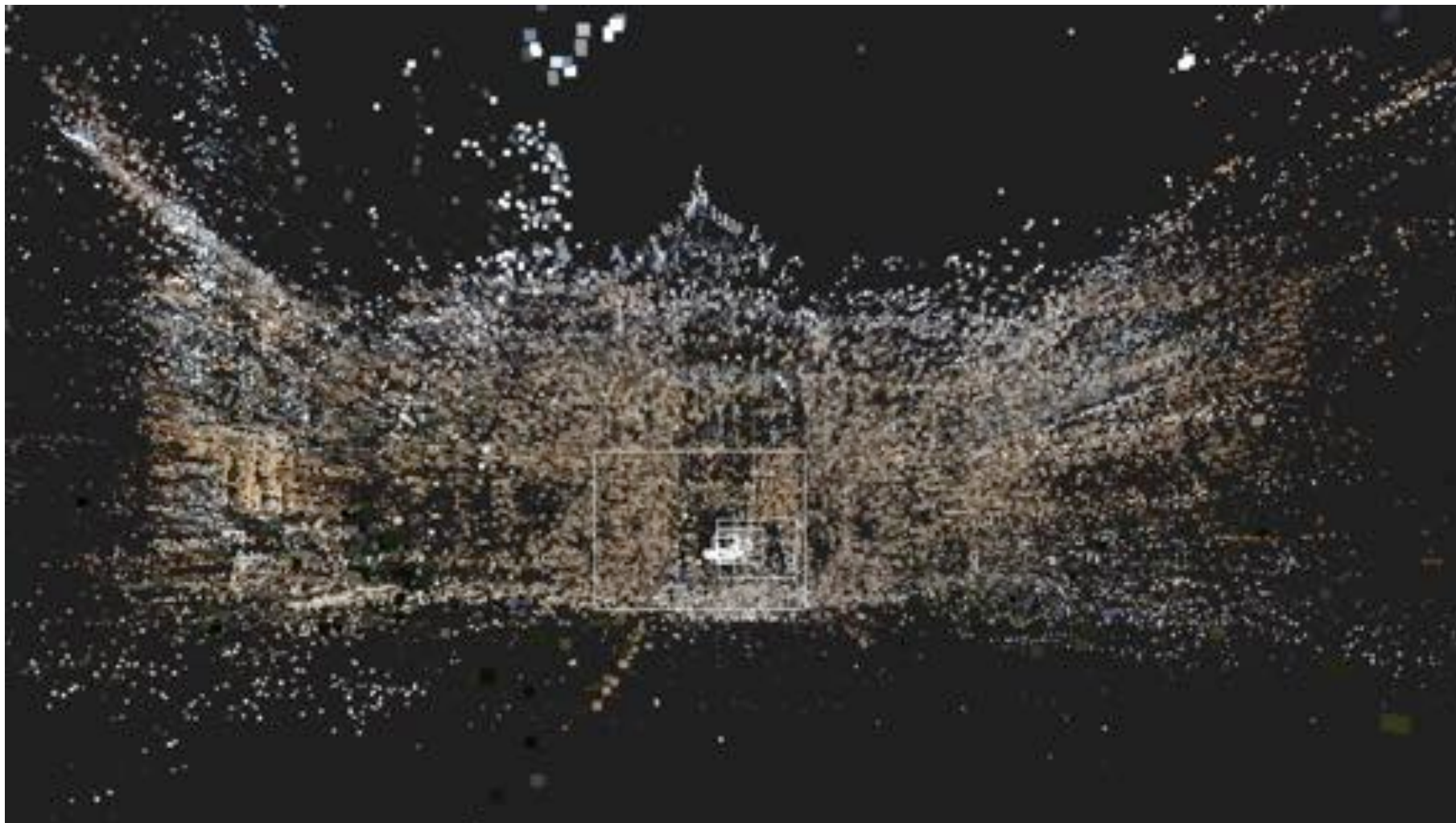


Image Processing

Upon upload, photos are processed immediately to blur faces and license plates, and to detect features.



Point Clouds





Le Mans
by paulinus



3D Reconstruction



To position objects detected in photos/video

Semantic Segmentation



Object Recognition



Automatic detection and positioning of signs



Map with us!

